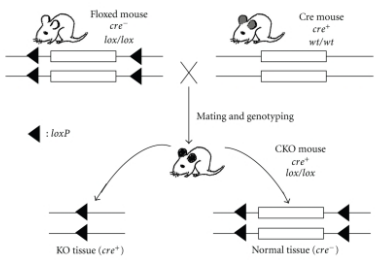


# The tools we use

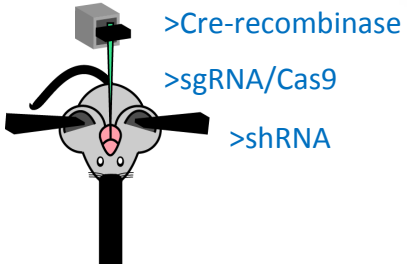
## Genes



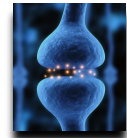
### Conditional/ knockout animals



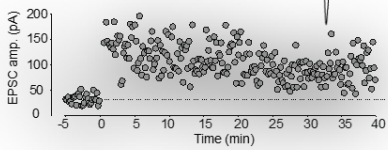
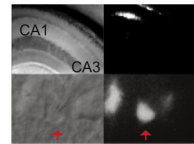
### Adeno associated/Lenti Virus



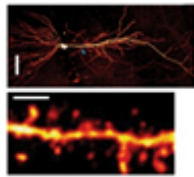
## Synapses



### In vitro electrophysiology



### Imaging



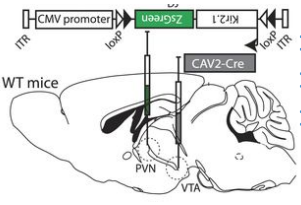
## Networks



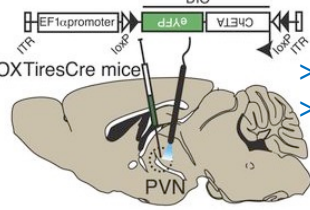
### In vivo electrophysiology



### Circuit mapping & manipulation



- >Rabies Virus
- >retro AAV
- >Canine adeno-virus

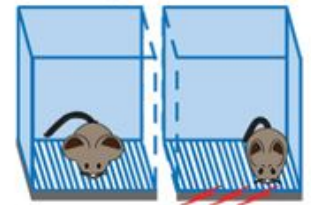


- >Optogenetic
- >Chemogenetic

## Behaviours



### Memory guided behaviours



### Choice/Preference

